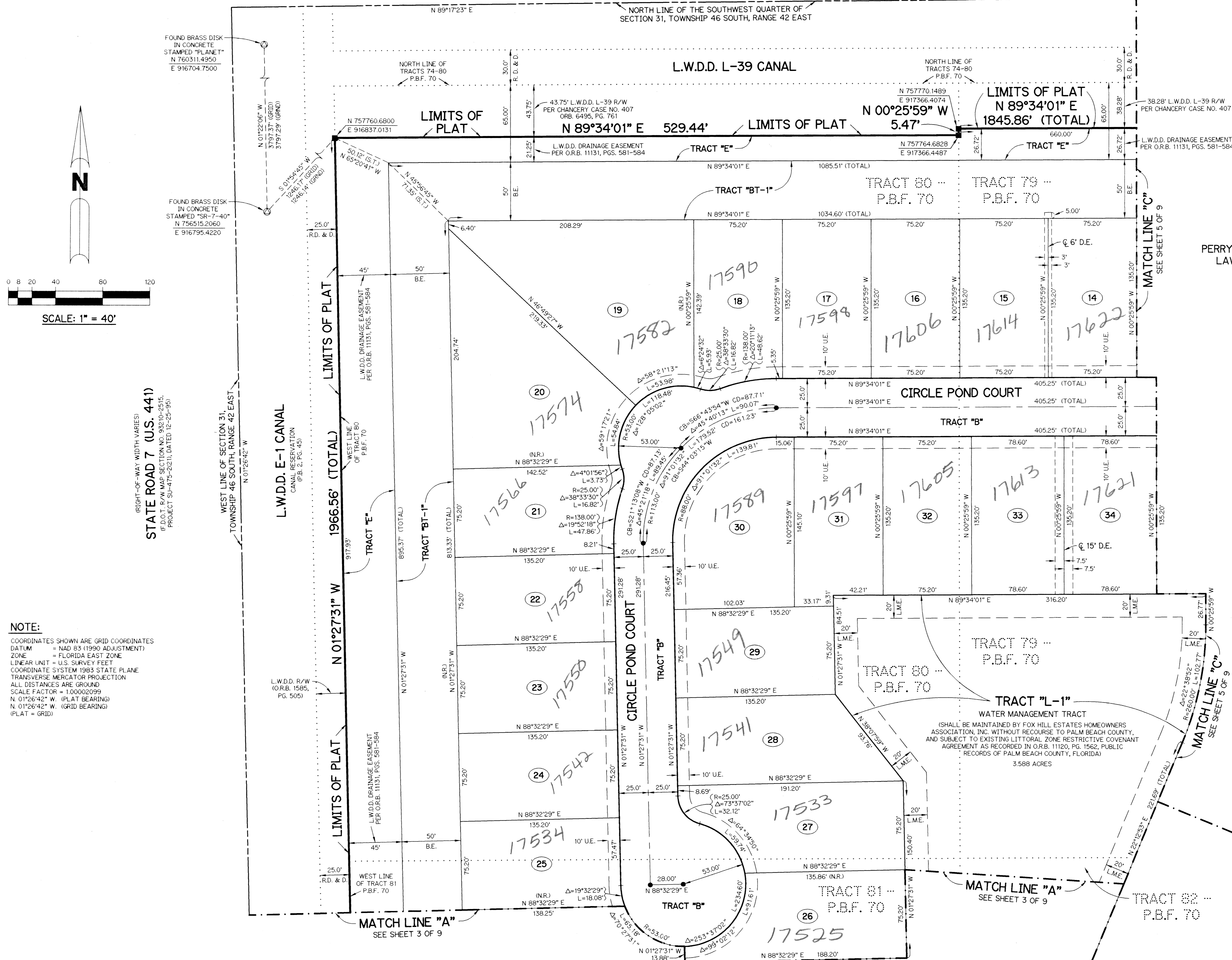


FOX HILL ESTATES OF BOCA RATON

BEING A REPLAT OF A PARCEL OF LAND LYING WITHIN TRACTS 74-87, 108-112, BLOCK 70, PALM BEACH FARMS COMPANY PLAT NO. 3, PLAT BOOK 2, PAGE 45, WITH RIGHT-OF-WAY QUIT-CLAIMED PER OFFICIAL RECORD BOOK 9075, PAGE 1600 ALL OF THE PUBLIC RECORDS OF PALM BEACH COUNTY, FLORIDA. LYING IN SECTION 31, TOWNSHIP 46 SOUTH, RANGE 42 EAST.



THIS INSTRUMENT PREPARED BY
 PERRY C. WHITE, P.S.M. 4213, STATE OF FLORIDA
 LAWSON, NOBLE AND WEBB, INC., LB-6674
 ENGINEERS PLANNERS SURVEYORS
 420 COLUMBIA DRIVE, SUITE 110
 WEST PALM BEACH, FLORIDA

- LEGEND:**
- - SET PERMANENT REFERENCE MONUMENT, LB-6674
 - - PERMANENT CONTROL POINT, PSM #4213
 - Δ - DELTA ANGLE
 - △ - BUFFER EASEMENT
 - C.B. - CHORD BEARING
 - C.D. - CHORD DISTANCE
 - ☉ - CENTERLINE
 - D.B. - DEED BOOK
 - D.E. - DRAINAGE EASEMENT
 - L - ARC LENGTH
 - L.A.E. - LIMITED ACCESS EASEMENT
 - L.M.A.E. - LAKE MAINTENANCE ACCESS EASEMENT
 - L.M.E. - LAKE MAINTENANCE EASEMENT
 - L.W.D.D. - LAKE WORTH DRAINAGE DISTRICT
 - N.R. - NOT RADIAL
 - N.T.S. - NOT TO SCALE
 - O.E. - OVERHANG EASEMENT
 - O.R.B. - OFFICIAL RECORD BOOK
 - P.B. - PLAT BOOK
 - P.B.F. - PALM BEACH FARMS COMPANY PLAT NO. 3 (P.B. 2, PGS. 45-54)
 - P.G.S. - PAGES
 - P.S.M. - PROFESSIONAL SURVEYOR AND MAPPER
 - R - RADIUS
 - R.D. & D. - ROAD, DITCH & DYKE RESERVATION (P.B. 2, PGS. 45-54)
 - R/W - RIGHT-OF-WAY
 - S.T. - SURVEY TIE
 - U.E. - UTILITY EASEMENT
 - N 737648.0171 - DENOTES STATE PLANE COORDINATES E 905258.2326
 - GRID - INDICATES STATE PLANE GRID DISTANCE
 - GRND - INDICATES GROUND DISTANCE

NOTE:

COORDINATES SHOWN ARE GRID COORDINATES
 DATUM = NAD 83 (1990 ADJUSTMENT)
 ZONE = FLORIDA EAST ZONE
 LINEAR UNIT = U.S. SURVEY FEET
 COORDINATE SYSTEM 1983 STATE PLANE
 TRANSVERSE MERCATOR PROJECTION
 ALL DISTANCES ARE GROUND
 SCALE FACTOR = 1.00002099
 N 01°26'42" W (PLAT BEARING)
 N 01°26'42" W (GRID BEARING)
 (PLAT = GRID)

Subdivision: Fox Hill Estates
 Book: 87
 Page: 5
 Flood Zone: B
 Quad: 53
 Section: 34
 Tax: 880
 PUD Name: Rainbow PUD

